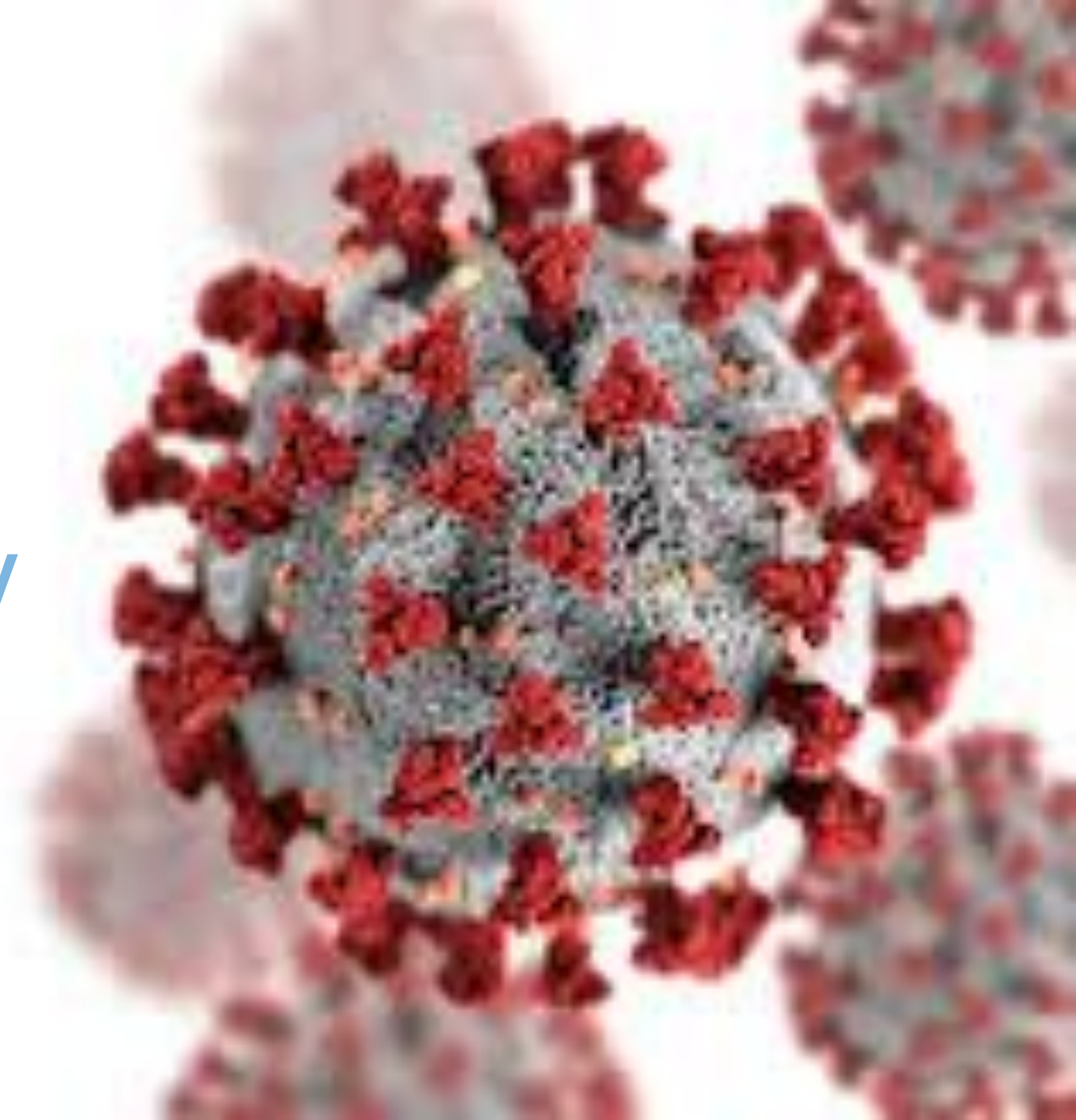


Covid-19 in Mobile County

Preliminary Findings of Traffic
Pattern Impacts



COVID-19 TIMELINE IN ALABAMA

First Confirmed COVID-19
Case in Alabama

March 13

Shutdown
Begins

March 17

Stay at Home
Order in Effect

April 3

Safer at Home
Order in Effect

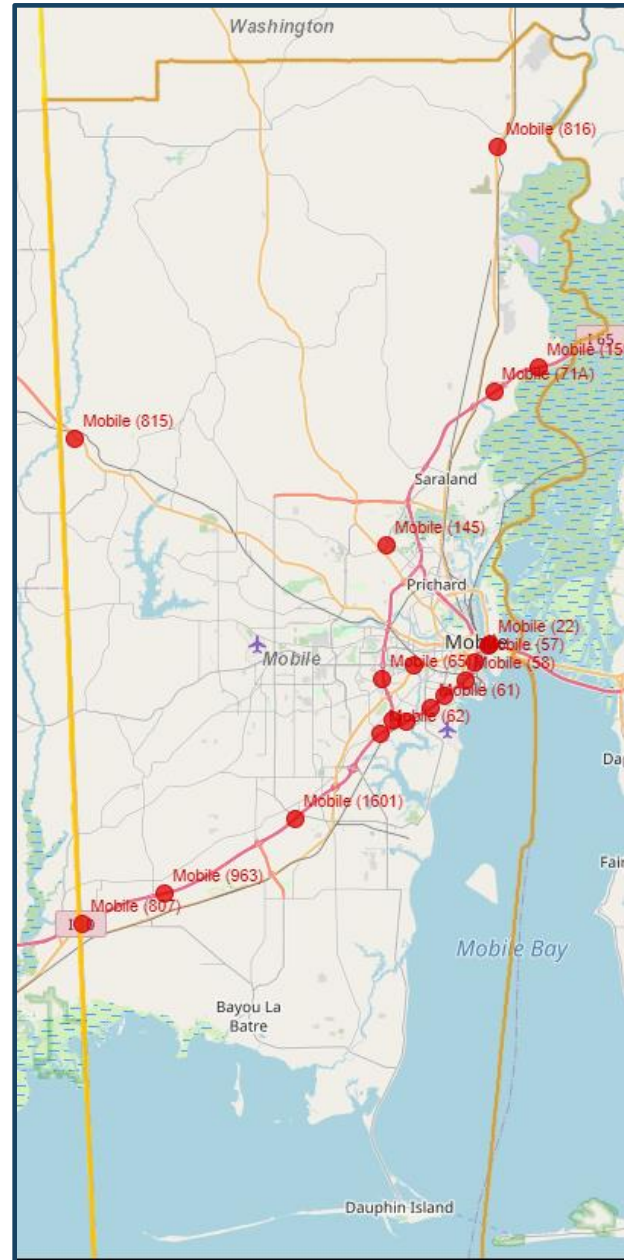
April 30

Observations

- **Traffic volumes**
 - Alabama Department of Transportation (ALDOT) Continuous Count Stations
- **Speeds**
 - National Performance Management Research Data Set (NPMRDS)
- **Crashes**
 - Critical Analysis Reporting Environment (CARE)

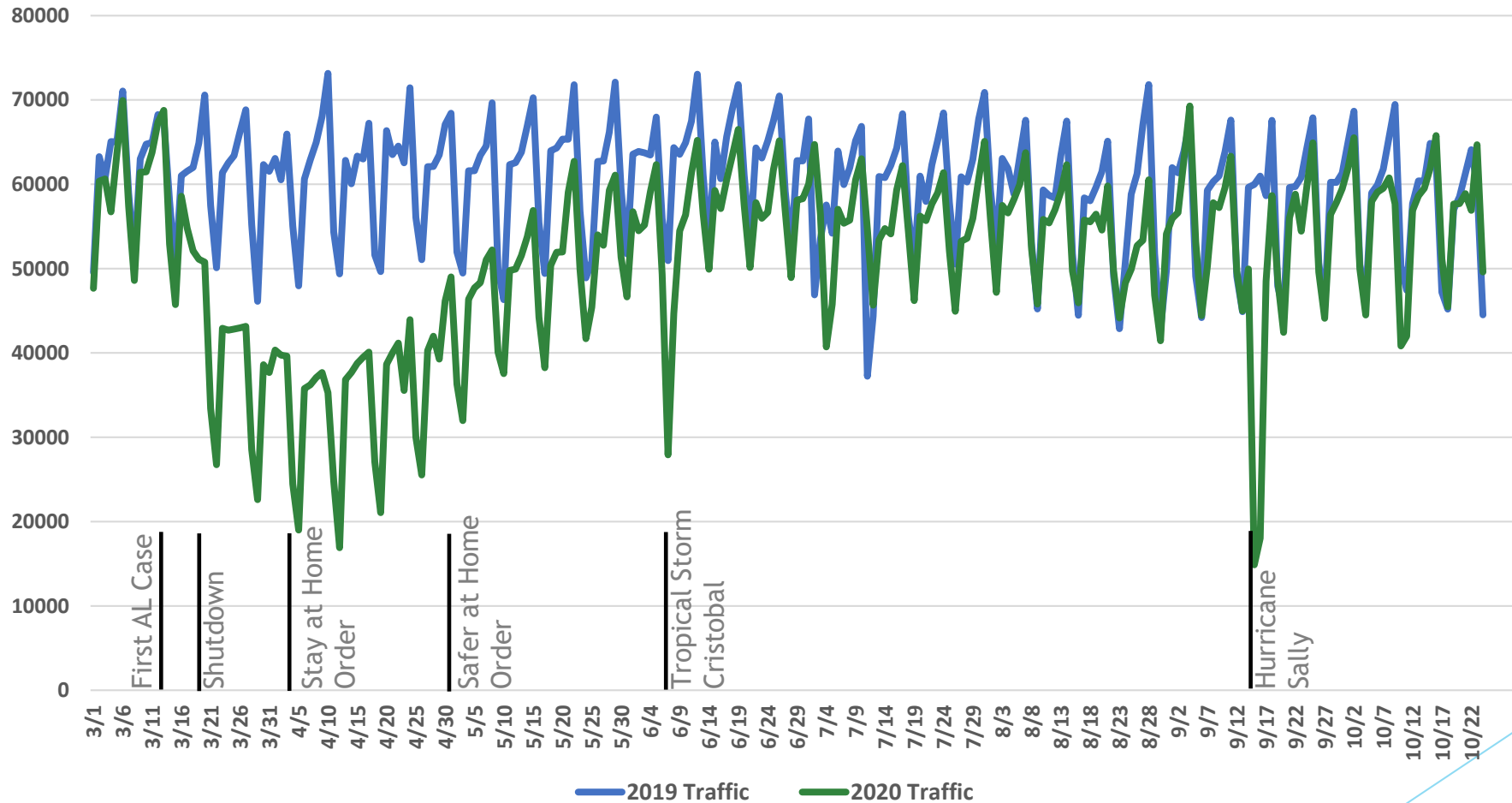
Traffic Volumes

- Data Source
 - ALDOT
- Locations Observed
 - 18 Continuous Count Stations Throughout Mobile County
- Time Frame of Data Collected
 - March Through October for 2019 And 2020



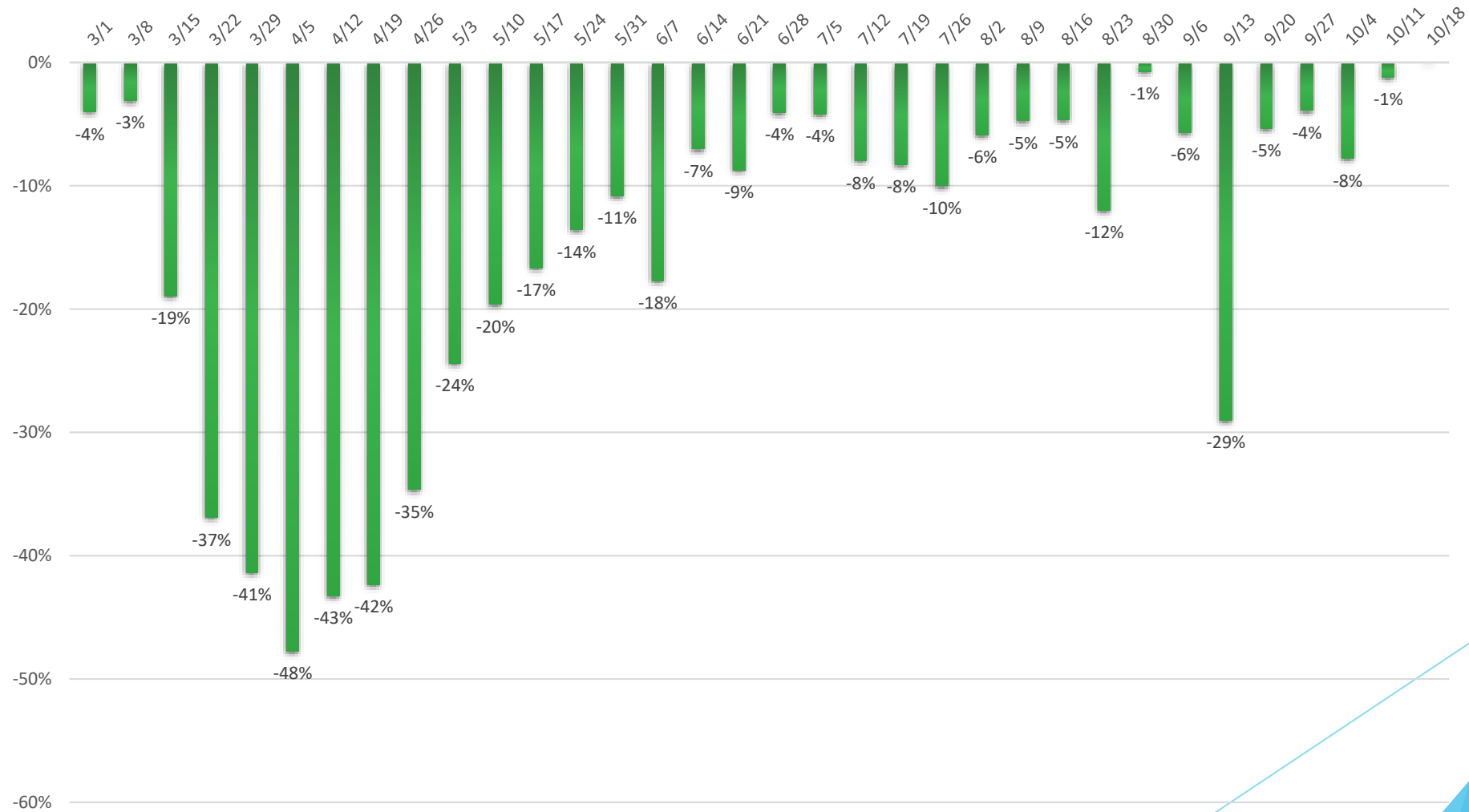
Traffic Volumes

2019 vs 2020 Average Daily Traffic Volumes in Mobile County



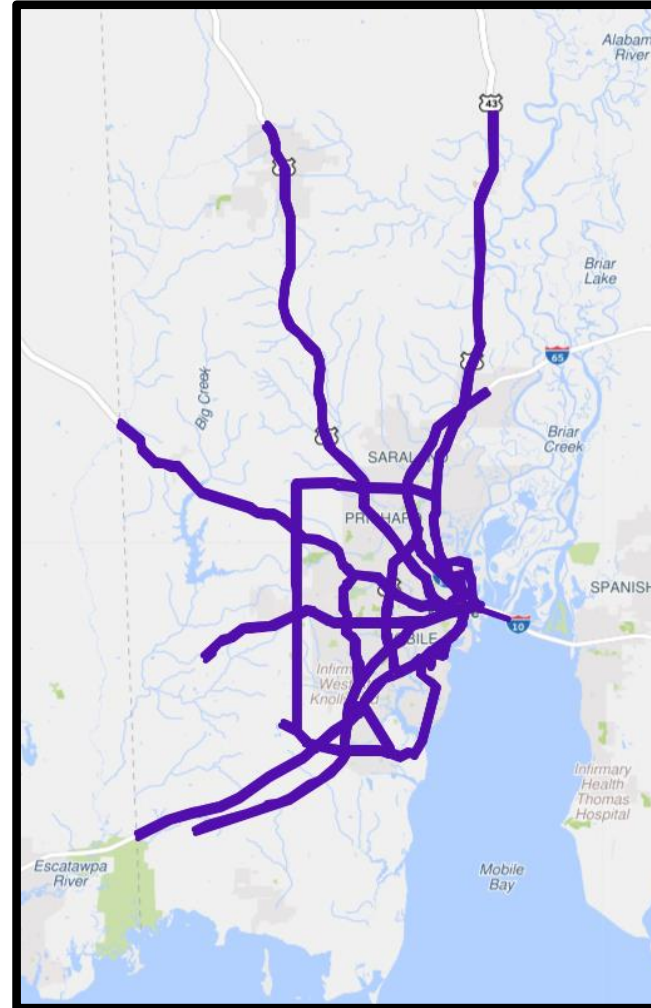
Traffic Volumes

Relative Change in Weekly Average Traffic Volumes Between 2019 and 2020



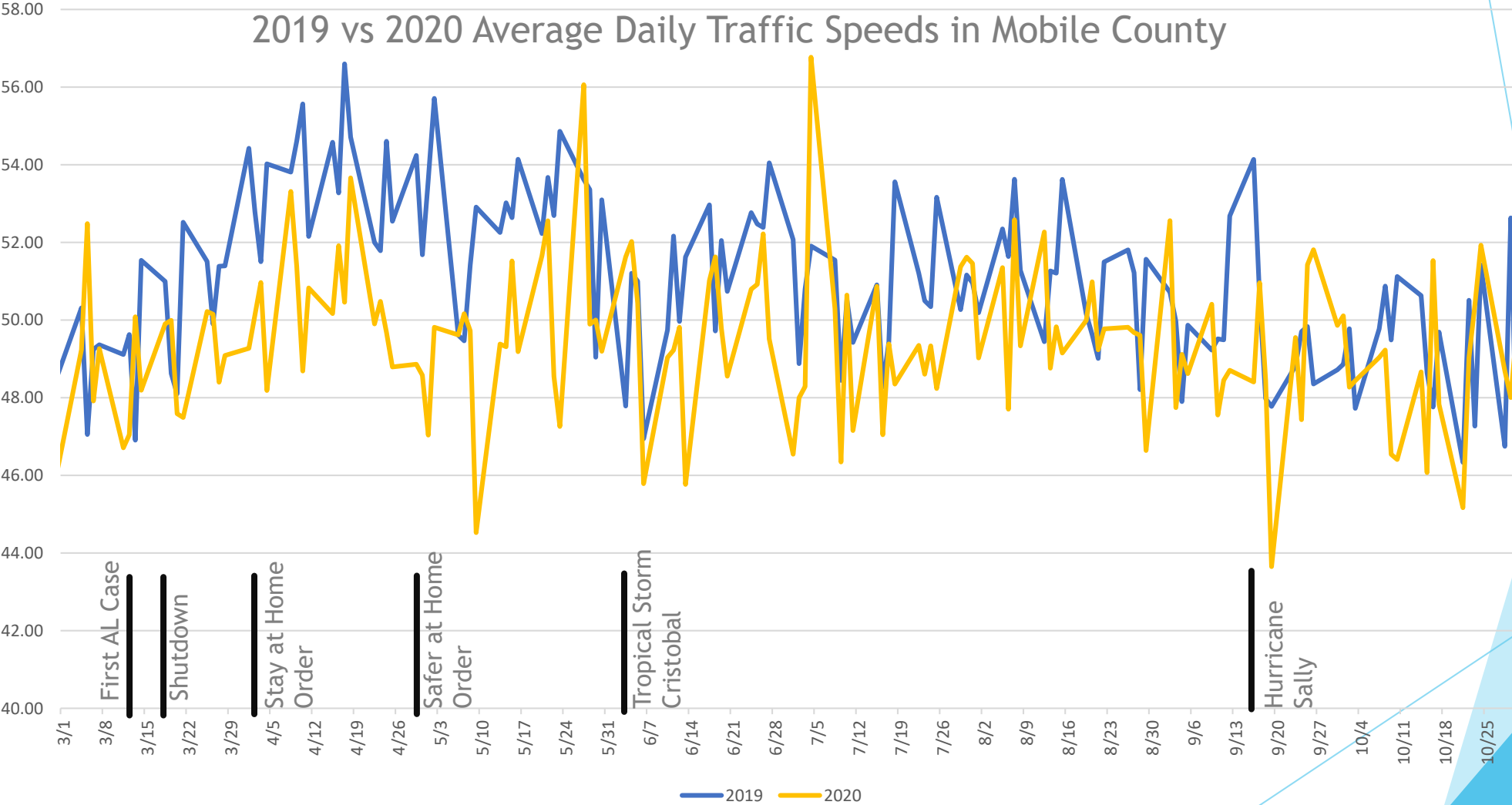
Speeds

- Data Source
 - National Performance Management Research Data Set (NPMRDS)
- Roads Observed
 - ~100,000 Records for 510 Observed Traffic Management Channel Road Segments.
- Time Frame of Data Collected
 - March Through October for 2019 And 2020; 6PM; Monday - Thursday



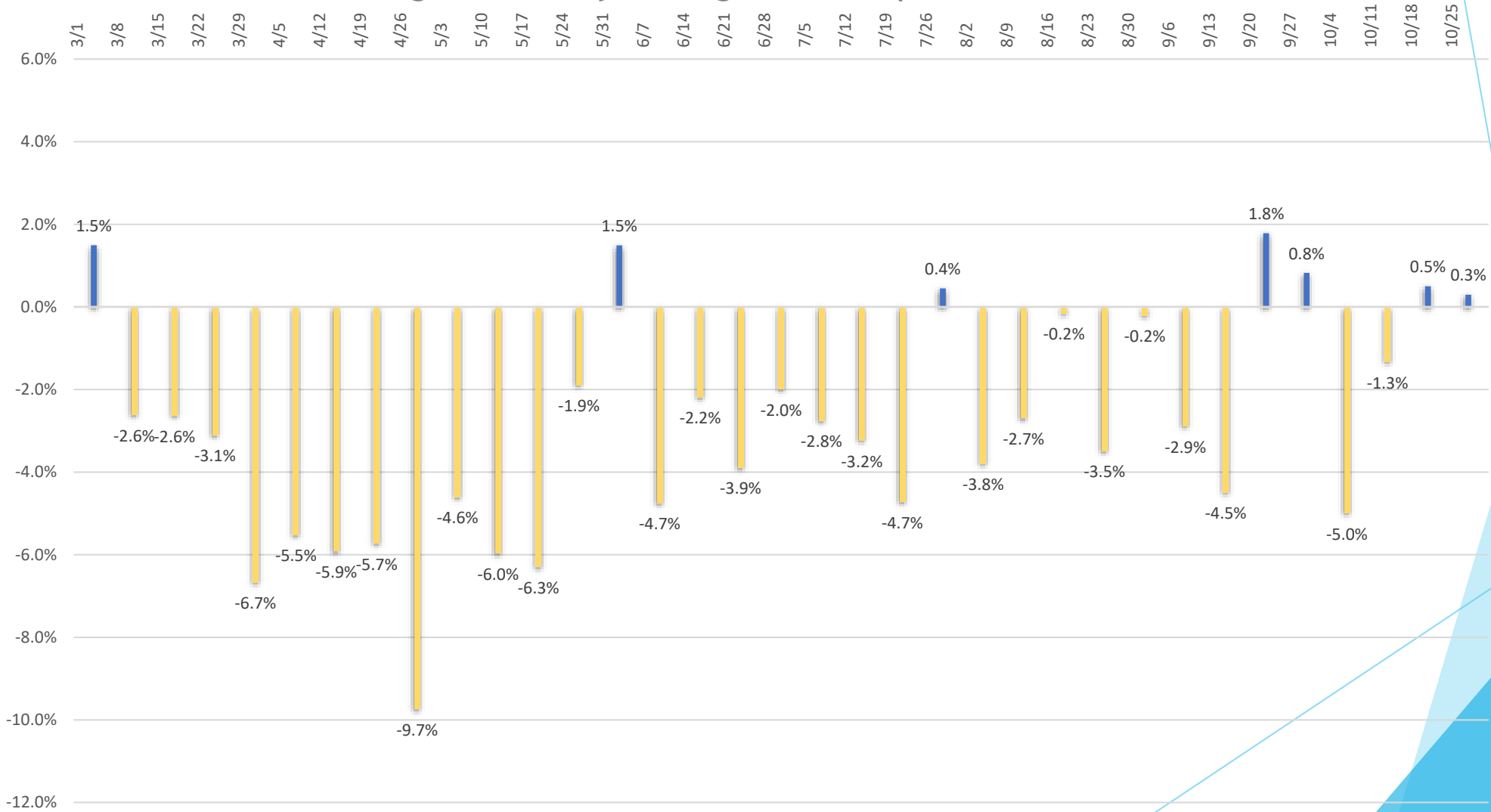
Speeds

2019 vs 2020 Average Daily Traffic Speeds in Mobile County



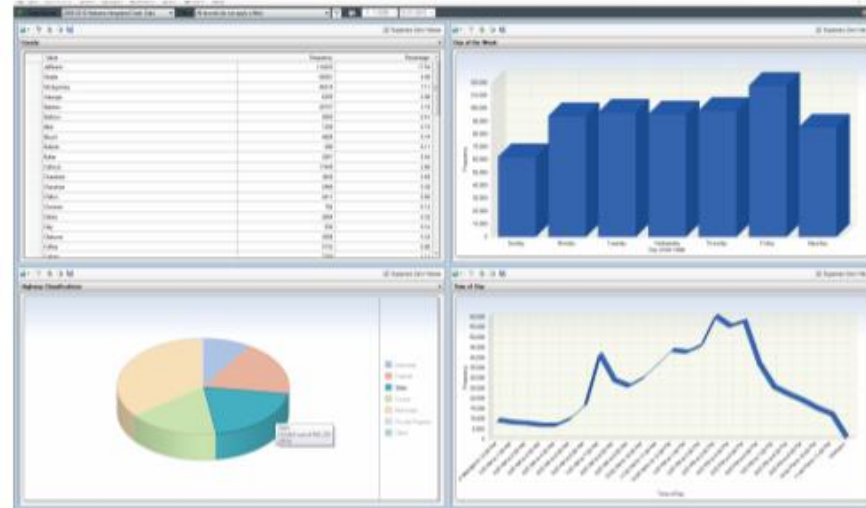
Speeds

Relative Change in Weekly Average Traffic Speeds Between 2019 and 2020



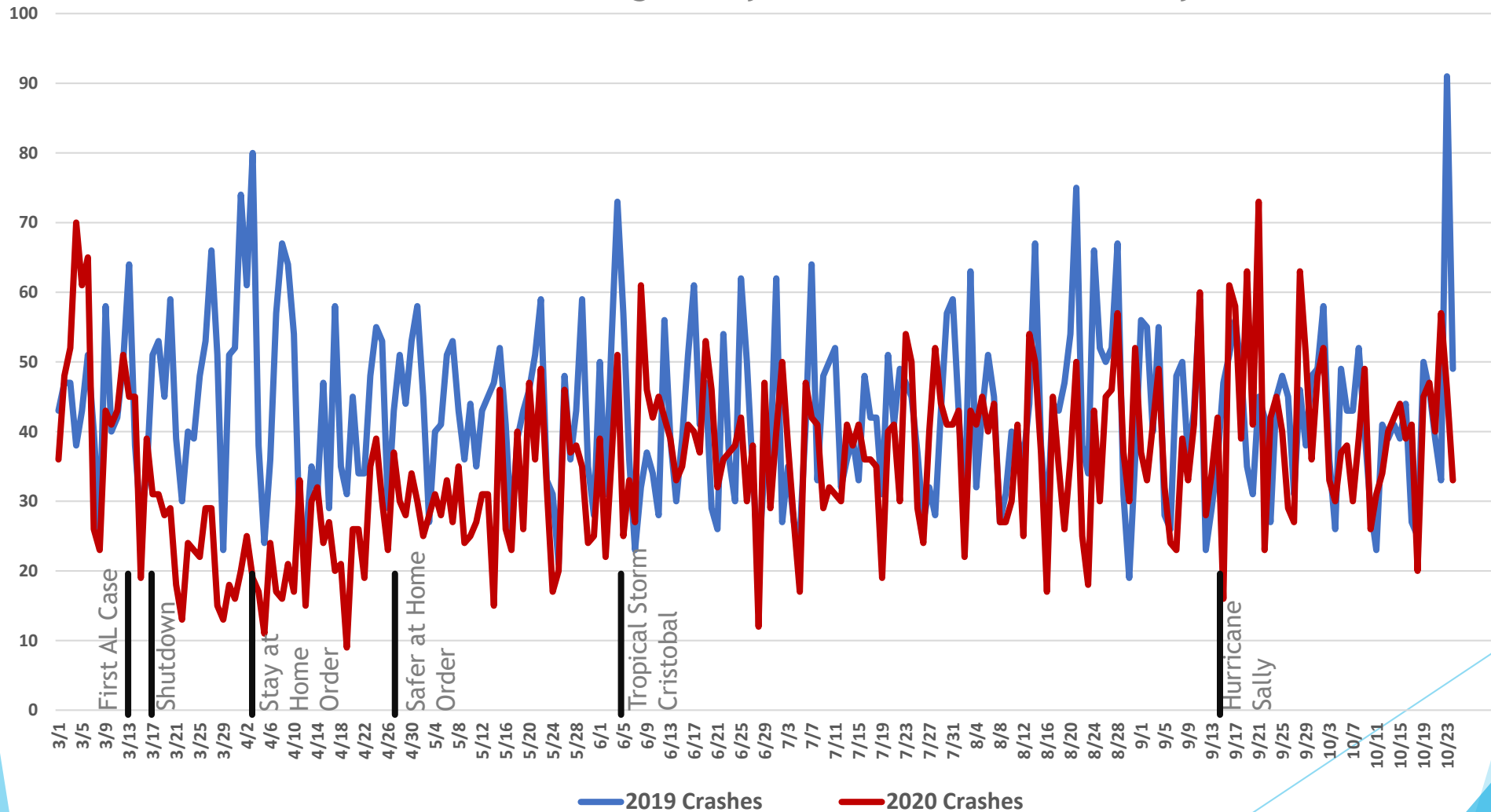
Crashes

- Data Source
 - Critical Analysis Reporting Environment (CARE)
- Crashes Observed
 - All Crashes Occurring within Mobile County
- Time Frame of Data Collected
 - March Through October for 2019 And 2020



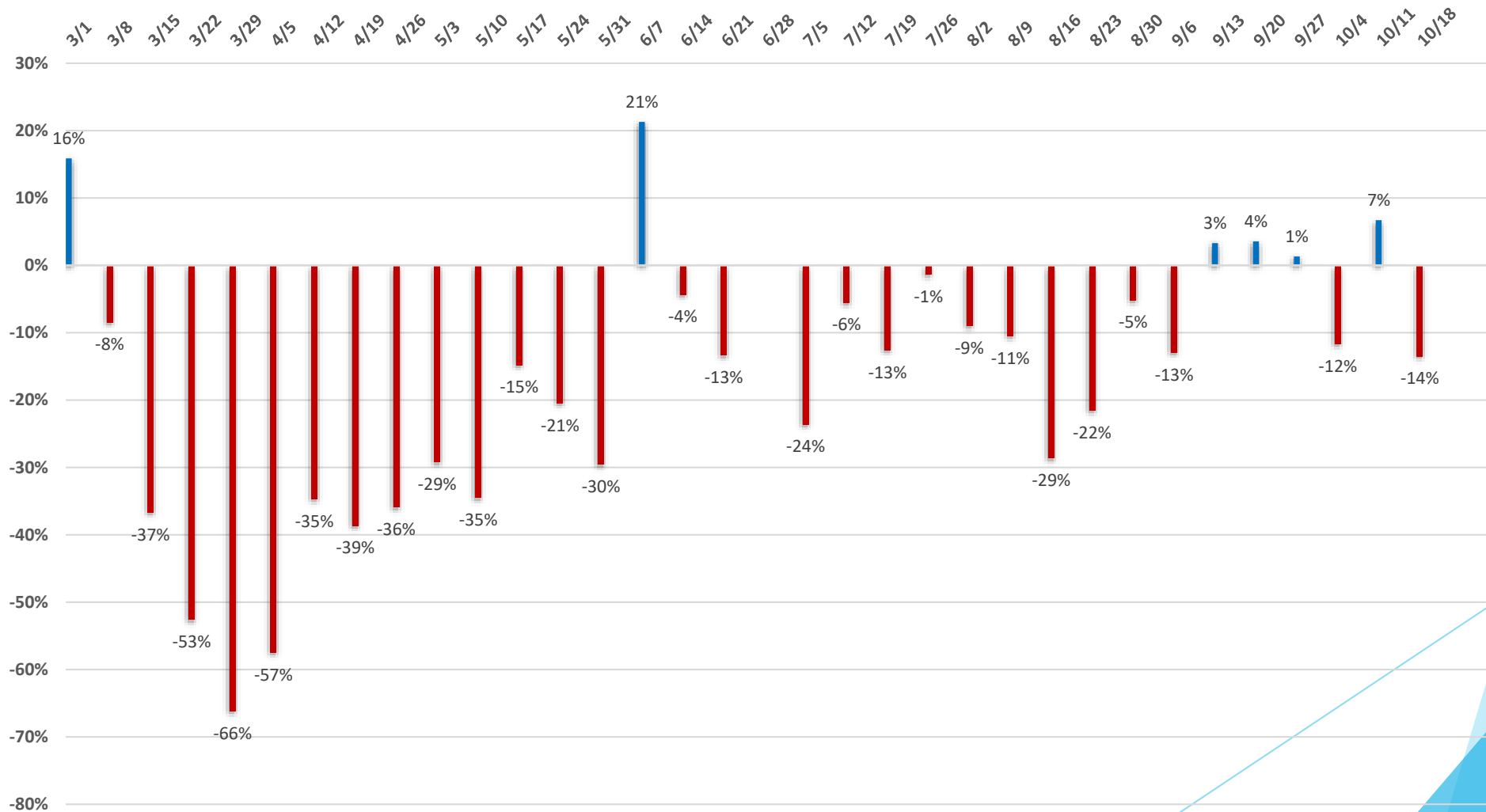
Crashes

2019 vs 2020 Average Daily Crashes in Mobile County



Crashes

Relative Change in Weekly Average Crashes Between 2019 and 2020



Observational Conclusions of Covid-19 Impacts on Travel Patterns

- **Traffic volumes**
 - Traffic volumes reduced considerably
- **Speeds**
 - Speeds reduced slightly
- **Crashes**
 - Crashes dropped significantly

Questions?